

QUICK GUIDE

DIGITAL CONTROL 2024 v.1

DRUMFILTERS



Index

1	BASIC REQUIREMENTS.....	3
1.1	Control unit.....	4
1.2	Configuration.....	5
1.3	Options WiFi module.....	6
2	A. GRAVITY-SYSTEM.....	7
2.1	Placing the filter system.....	7
2.2	Schematic setup.....	8
2.3	Set level control.....	8
3	B. PUMP FED SYSTEM.....	10
3.1	Schematic setup.....	10
3.2	Placing the filter system.....	10
3.3	Set level control.....	10
4	WARRANTY.....	12

1 Basic requirements

Basic requirements every filter system must meet:

- The filter system should be placed on a ground surface with sufficient carrying capacity, for instance:
 - a well-vibrated sand bed of 10 cm, possibly with concrete tiles
 - a concrete floor

In the event of subsidence, the filter may not function properly!

- The filter system should be placed fully level.
- Leave sufficient space around the filter, to perform cleaning and maintenance work.
- The filter control should be in a dry area, preferably indoors.
- The drive motor must be protected against weather influences.

The filter system can be used as gravity-system or pump fed system.



IMPORTANT!

The correct placement and constant water level in the pond are important conditions for optimal and problem-free operation of the filter system.



IMPORTANT!

The use of salt in the pond can cause stainless steel components of the filter to oxidize.

1.1 Control unit

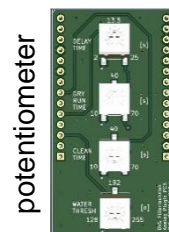
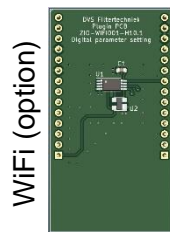
Controller is not waterproof, please keep it out of the water. Place it under cover from the rain!



1.2 Configuration

Log in to the WiFi module:
 Look for new networks: **DVS FILT**
 Password: **Welkom123#**

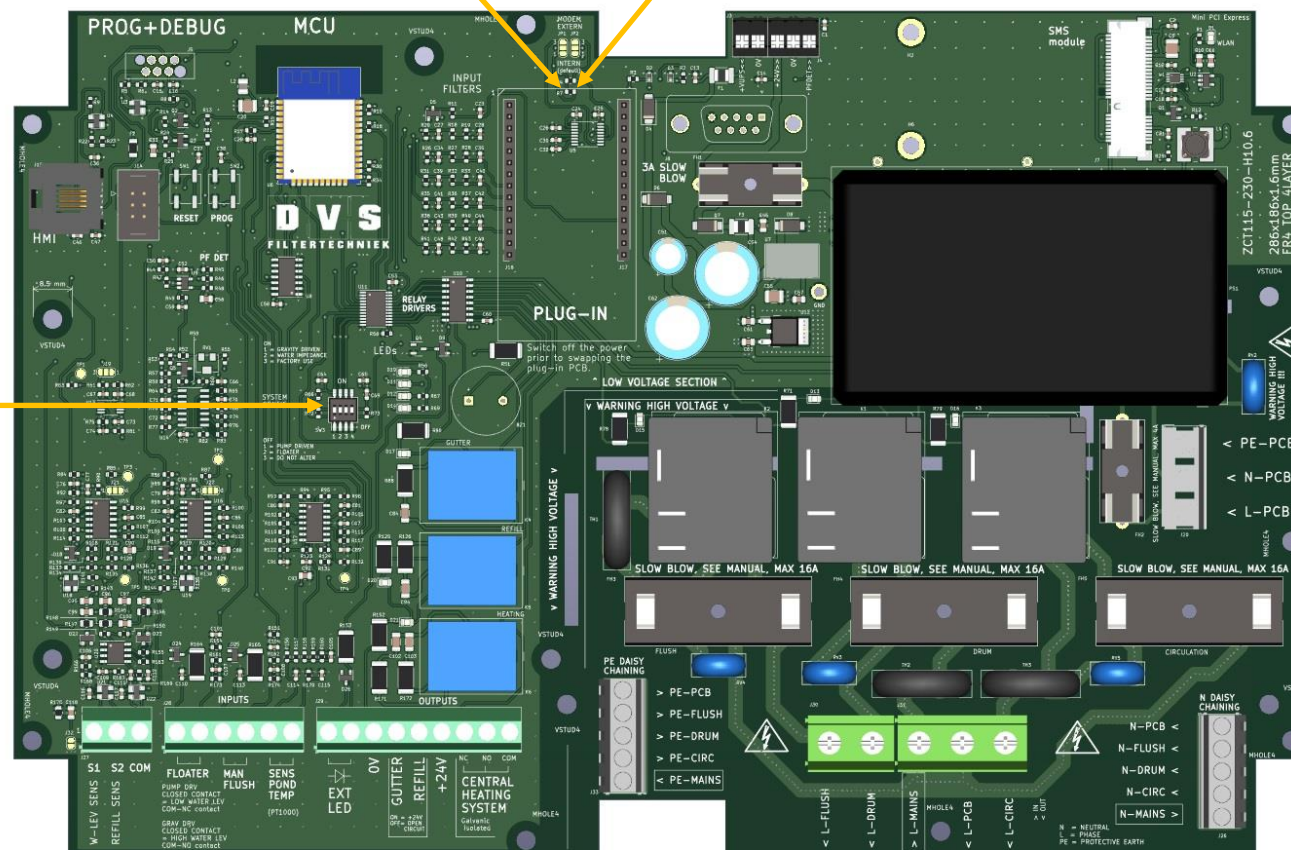
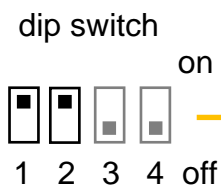
Go to the internet browser,
 log in at the following address: **192.168.1.1**



- DELAY TIME : set time when pond pump switches off (delay to power off) 2-25s
- DRY RUN TIME : set the time that the pond pump remains off (delay to power on) 10-70s
- CLEAN TIME : set rinse time 10-70s
- WATER THRESH : set sensor sensitivity 0-100%

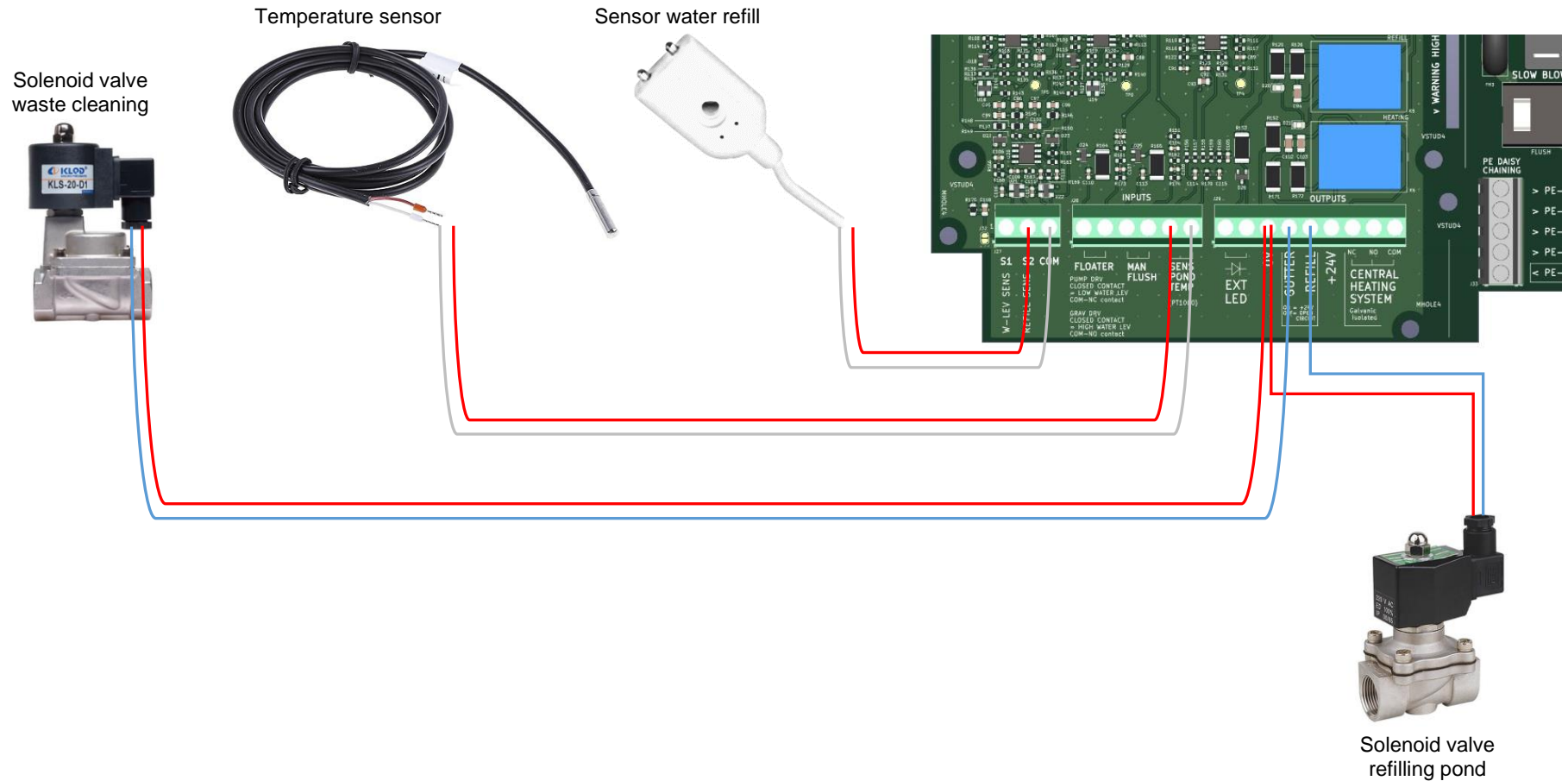
Dip switch

- 1 on → gravity
- 1 off → pump fed
- 2 on → sensor 2-pens
- 2 off → float switch



1.3 Options WiFi module

The options below are only possible in combination with a WiFi module.



2 A. Gravity-system

2.1 *Placing the filter system*

- Determine the maximum water level of the pond.
- Align the base plate horizontally (the filter should be placed fully level).
- The filter should be placed the height of the installation height (pic. 2.1) above water level. (installation height is the distance from maximum water level to top of filter).

Type filter	Installation hight [cm]
ECO 20	16
ECO 22	16
PP35	17
PP40	12
PP65	12
PP65-P	12
PP100N	12

Type filter	Installation hight [cm]
ENTRY C25	17
ENTRY C25 low	17
ENTRY M25	17
C22	12
CL35	12
CL65	12

- For the operation of the gravity system a constant water level in the pond is necessary. A tolerance of up to 20 mm below maximum water level is allowed.
- Should the maximum water level in the pond exceed this, the excess water will be disposed of via the waste water drain, until the maximum water level has been reached

2.2 Schematic setup

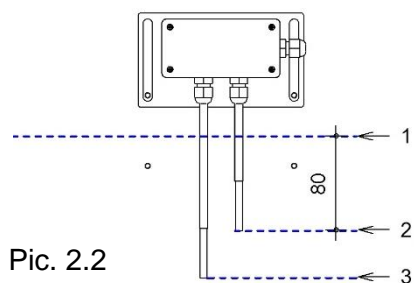
- To get the best out of the RDF, use all of the water inlets at 4". This result in good water turn over ratio for your pond.

2.3 Set level control

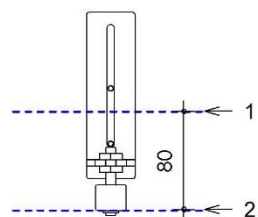
Sensor / float switch in clean chamber.

Pic. 2.2 / 2.3

1. Water level with running pump after rinse (8 cm above upper float switch)
2. Start rinsing
3. Pondpump switches off

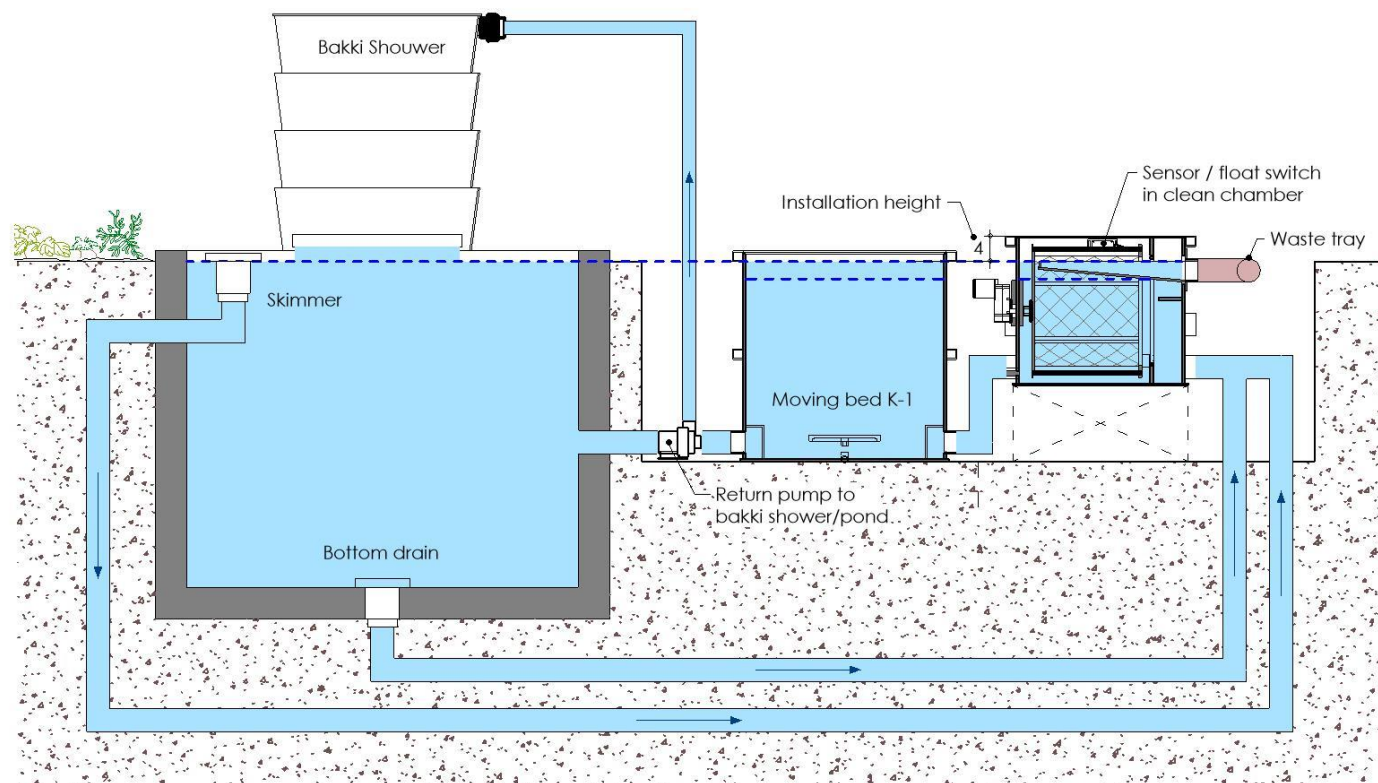


Pic. 2.2

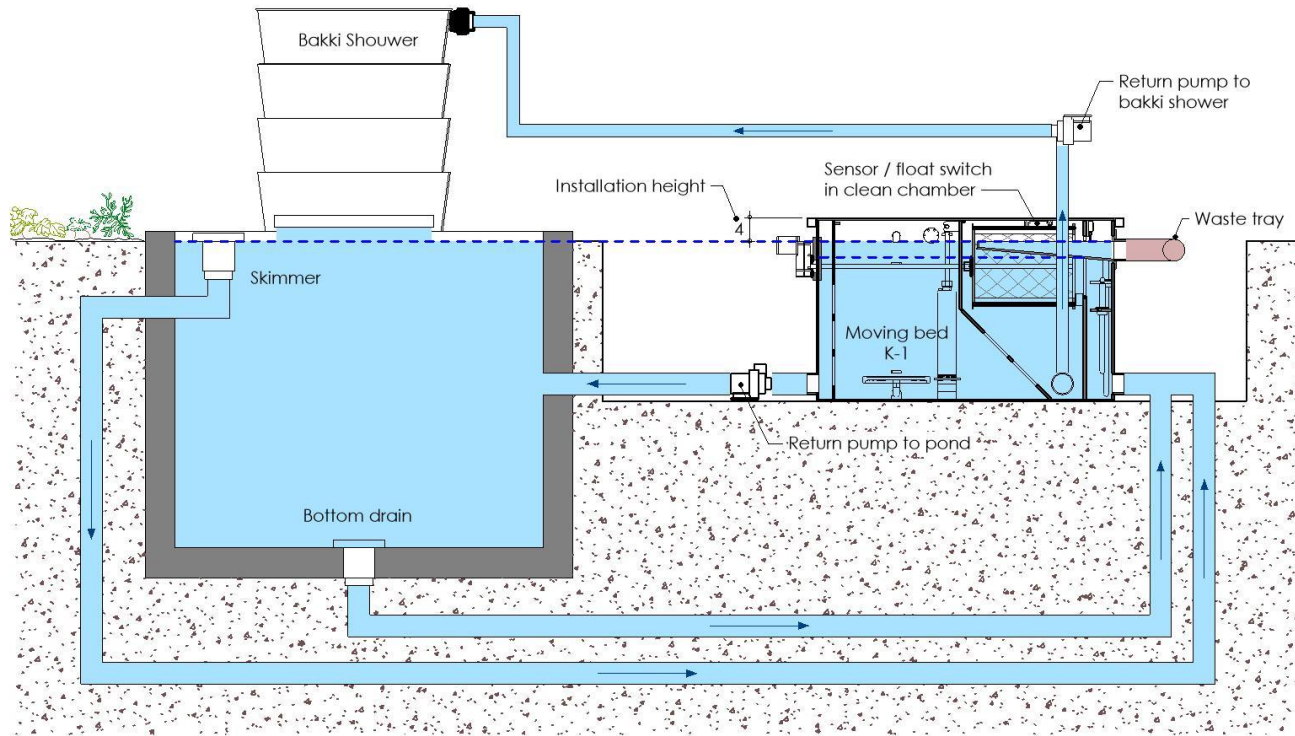


Pic. 2.3

- For Gravity, the water level of the pond must lined with the top of the RDF waste tray.
- The water outlets on the top or sides of the RDF must be closed as these outlets are for pump fed usage configuration.
- The return pump is determined by how much water flow from the pond to the RDF. For example if you have 2000GPH water flow from pond to RDF, but you are using 5000GPH pump to push water from RDF to shower or back to pond. This would not work, as you are missing 3000GPH. The flow must be balanced.



Pic. 2.1 Schematic setup of the drum filter

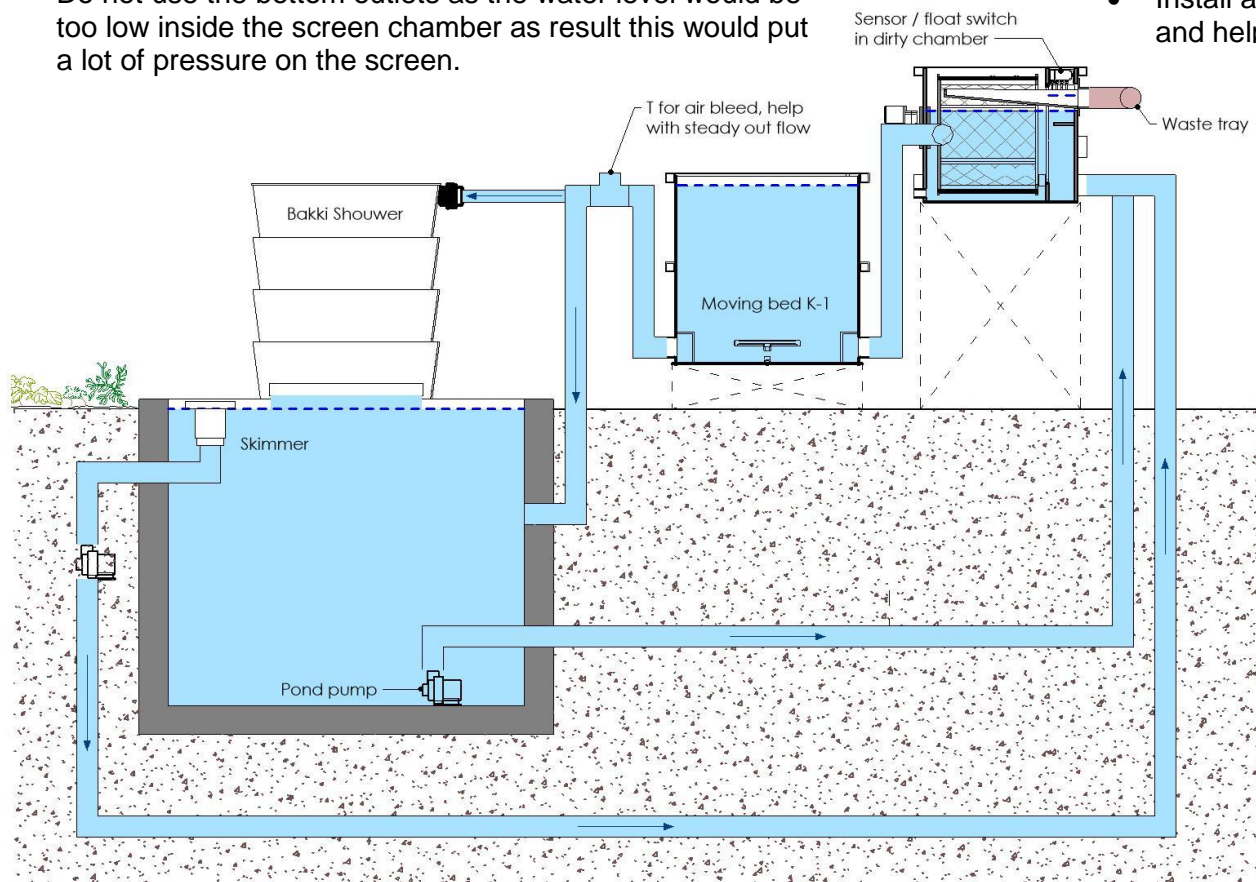


Pic. 2.4 Schematic setup of the combi filter

3 B. Pump fed system

3.1 Schematic setup

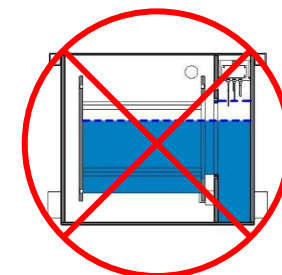
- For Pump fed, you can use a water pump to push water from the pond/skimmer into the RDF and from the RDF the water gravity flow back to the moving media K-1 filter or Bakki Shower, however the RDF unit must be above these units.
- For Pump fed, close all the bottom outlets and use the sides/top outlets. Do not use the bottom outlets as the water level would be too low inside the screen chamber as result this would put a lot of pressure on the screen.



Pic. 3.1 Schematic setup of the drum filter

3.2 Placing the filter system

- Determine the maximum water level of the pond
- The installation height is min. 30 cm (installation height is the distance from maximum water level to the top of the filter)
- Install a tee at the outlets help prevent air pressure build up and help with steady water out flow

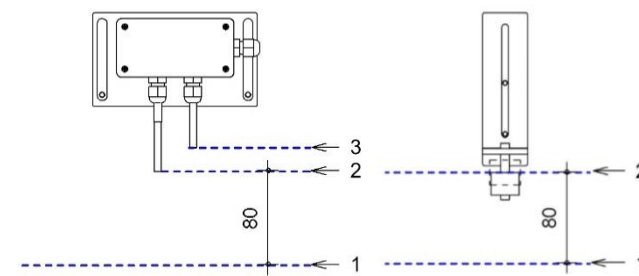


3.3 Set level control

Sensor / float switch in dirty chamber.

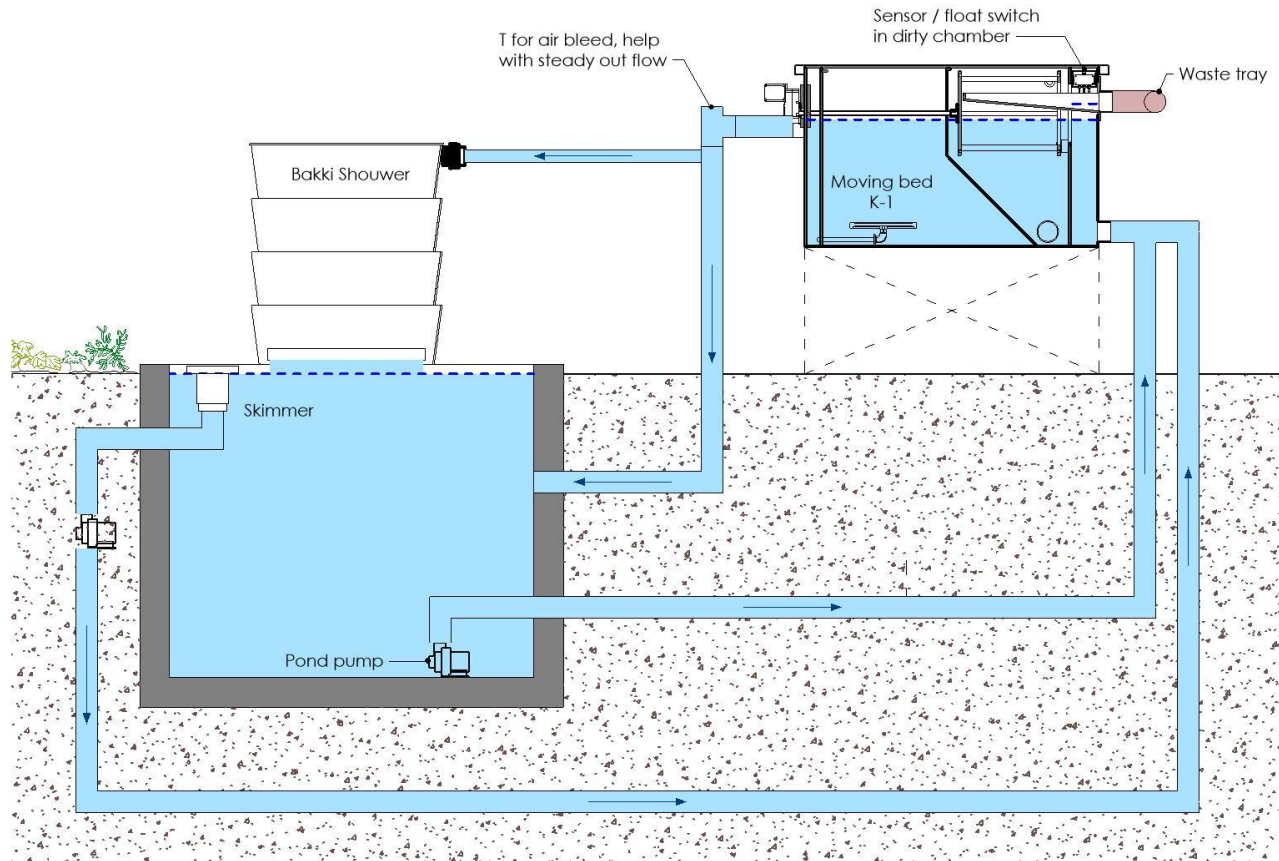
Pic. 3.2 / 3.3

1. Water level with running pump after rinse
2. Start rinsing
3. Pond pump switches off



Pic. 3.2

Pic. 3.3



Pic. 3.4 Schematic setup of the combi filter

4 Warranty

Your RDF unit is guaranteed against any manufacturing faults on the Polypropylene or Stainless Steel parts for a period of one (1) year.

RDF Housing
RDF Motor
RDF Booster / Cleaning Pump
Stainless steel parts, like shaft and screws
Controller and all parts inside
Screen / Screen Panels

We do not warranty if the controller, motor, booster pump are damaged by water or misused.

We do not warranty the screen or the screen panels for improper use of clean chemical or lack of cleaning or misused.

When installing the unit, the unit must be on a flat, leveled and well supported surface.

Any modifications to RDF would void your warranty. Not using original spare parts will void your warranty as well. For any alterations to your RDF please contact us for a written consent.

Disclaimer:

We reserved the right to refuse any warranty claim from purchased outside of our Dealer's Network, International, eBay, Craigslist and / or any other auction sites.

Please contact us if you have any questions or concerns. Please review the warranty policy included with your purchased product for additional details.

READ THIS MANUAL BEFORE INSTALLING OR USING YOUR NEW PURCHASED PRODUCT.

This manual explains the features of this product and also serves as a guide to safe and proper installation and operating procedures and techniques.

ALL INFORMATION CONTAINED IN THIS MANUAL IS CURRENT AT THE TIME OF PRINTING.

Because we Sea Side Aquatics, LLC are committed to continuous product development, we reserve the right to make product, design, and informational changes without notice. Please check www.seasideaquatics.com for update information.

ALL ELECTRONIC PRODUCTS MUST BE CONNECT TO A CERTIFIED GFI OUTLET

Please contact Sea Side Aquatics for any problems or missing parts do not return to store. Our warranty only applies for the original buyer with proof of purchased receipt and the product has been registered with Sea Side Aquatics.

We warrant that the product will be free from defects in material and workmanship under normal use for a period of (1) year from the date of original purchase if the product is installed and used properly and consistent with the User Manual. Our warranty shall not apply: (i) to any damaged that has been subjected to accident, misuse, neglect, alteration, acts of God, improper handling, improper transport, improper storage, improper use or application, improper installation, improper testing or unauthorized repair, (ii) to cosmetic problems or defects that result from normal wear and tear under ordinary use, and do not affect the performance or use of the product. Our warranty applies only to a product that is manufactured by Sea Side Aquatics, LLC. If you notice a problem with your product, do not attempt to repair it yourself. Any attempts at self-repair shall void this limited warranty. We shall not be held liable for damage to any pond, aquarium, aquarium life forms, or other personal property or objects due to improper use of the device. If the product develops a covered defect within the one-year period, we will, at our option, either repair or replace the product without charge, provided that our product is returned during the warranty period. The warranty period is not perpetuate.

The customer is responsible for all shipping cost of the defective product back to our warehouse during the warranty period.

We will not be liable for any damage caused to your pond and/ or aquarium or personal property resulting from the use of our product.

To obtain warranty service or technical support, please contact us Sea Side Aquatics Customer Service Department at support@seasideaquatics.com or seasideaquatics@yahoo.com

You will receive instructions on how to return the product for repair or replacement. To take advantage of this Limited Warranty you will be required to supply an original point of purchase receipt.

ALL WARRANTIES ARE VOID IF THERE IS DAMAGE TO OUR PRODUCT THAT IS NOT A RESULT OF A DEFECT IN THE MATERIALS OR WORKMANSHIP. THE SOLE AND EXCLUSIVE REMEDY FOR ALL CLAIMS THAT YOU MAY HAVE ARISING OUT OF OR IN CONNECTION WITH YOUR USE OF THIS PRODUCT, WHETHER MADE OR SUFFERED BY YOU OR ANOTHER PERSON AND WHETHER BASED IN CONTRACT OR TORT, SHALL BE REPAIR OR REPLACEMENT OF THE PRODUCT. IN NO EVENT WILL SEA SIDE AQUATICS, LLC OR ITS DISTRIBUTOR BE LIABLE TO YOU OR ANY OTHER PARTY FOR ANY DIRECT, INDIRECT, GENERAL, SPECIAL, INCIDENTAL, CONSEQUENTIAL, EXEMPLARY OR OTHER DAMAGES ARISING OUT OF THE USE OR INABILITY OF TO USE THE PRODUCT (INCLUDING, WITHOUT LIMITATION, DAMAGES FOR LOSS OF BUSINESS PROFITS, BUSINESS INTERRUPTION, LOSS OF INFORMATION OR ANY OTHER PECUNIARY LOSS, DAMAGE TO YOUR POND OR AQUARIUM OR ANY POND OR AQUARIUM INHABITANTS), OR FROM ANY BREACH OF WARRANTY, EVEN IF SEA SIDE AQUATICS, LLC OR ITS DISTRIBUTOR HAS BEEN ADVISED OF THE POSSIBILITY OF SUCH DAMAGES. IN NO CASE SHALL SEA SIDE AQUATICS, LLC'

LIABILITY EXCEED THE AMOUNT YOU PAID FOR THE PRODUCT. IF YOU DISAGREE WITH THESE TERMS AND CONDITIONS DO NOT USE THE PRODUCT.

Clearance / Used / Discontinued items are no longer carry and there is no warranty or warranty.

Customer Support

www.seasideaquatics.com
support@seasideaquatics.com

1332 S Claudina Street
Anaheim, CA 92805
657-258-8466

Sea Side Aquatics assumes no responsibility or liability for any errors or omissions in the content of this site. The information contained in this site is provided on an "as is" basis with no guarantees of completeness, accuracy, usefulness or timeliness. Sea Side Aquatics will not be liable for any errors, omissions, or any losses, injuries, or damages arising from its display or use. All information is provided as is with no warranties and confers no rights.