

SMART POND DOSING SYSTEM XT

NEW

The Smart Pond Dosing System XT is an electronically-operated dispenser that accurately and consistently applies specially-formulated water treatments to water features, including large scale bodies of water. Pair the control panel to the Aquascape Smart Control App to control, monitor, and receive alerts on your smartphone or tablet.



Smart Pond Dosing System XT

#40040

Packaged Weight: 6 lb.

Packaged Dimensions: 11.5"L x 9.75"W x 15.25"H

- For use with ponds, waterfalls, and fountains
- Manage treating larger water features with ease

Includes: enclosure, (1) control panel, (1) treatment intake with low treatment alert, internal and external treatment tubing, and low-voltage transformer

Compatible with XT Simple Solution Water Treatments (sold separately) see pages 83-87

Add multiple treatments simultaneously with a Controller Add-on Kit



Smart Pond Dosing System Controller Add-On Kit

#40042

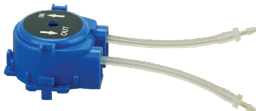
Packaged Weight: .75 lb.

Packaged Dimensions: 11"L x 4.75"W x 3.75"H

- Add to Smart Pond Dosing System XT to dose two 64 oz. treatments simultaneously
- Includes intake assembly, tubing, and power cable

Smart Pond Dosing System Pump Cartridge

#40041



Packaged Weight: .04 lb.

Dimensions: 2"L x 2.5"W x 2"H

- Peristaltic pump for use with the Smart Pond Dosing System XT
- Replace once per season to maintain dosing accuracy

NEW

SMART POND DOSING SYSTEM XT

FEATURES OF THE SMART POND DOSING SYSTEM XT

1. **Durable housing** is built to last and can be buried to conceal
2. **Hood design with mounted control panels** hides and protects components from weather conditions
3. **Large internal space** fits one large gallon or 1-2 64 oz. treatment bottles. Water treatments sold separately, (see pages 83-87).
4. Easily apply two different treatments simultaneously with an optional **Controller Add-On Kit** (sold separately)
5. Push-button **control panel** is easily calibrated to your water feature size



Low-treatment Alert

Low-treatment alerts you when the treatment is 90% empty



A red light on the control panel indicates low treatment



Smart Control

Connect to the app to control, monitor, and receive alerts on your smartphone or tablet

